



Functions

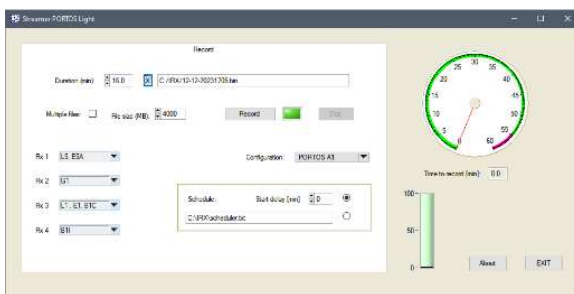
1. PORTOS records GNSS RF signal on a PC as digitized IF (DIF) file. Windows 10 PRO is supported.

The file then can be processed with a software receiver (for example IP-Solutions ARAMIS receiver or Borre's MATLAB receiver).

2. PORTOS can also work as a front end for real-time software GNSS receiver with RT API (optional)

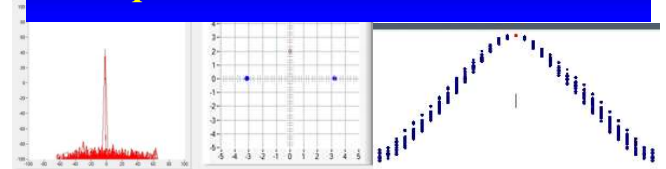
The PORTOS device down converts and digitize GNSS RF signal and send it to a PC. It does not contain any accelerators or processing chains.

Streamer recording software



The user-friendly Streamer software for Windows provides signal recording.

Examples



The pictures above are examples of PORTOS GPS L1 I-hand signal processing with ARAMIS receiver.

Specification for PORTOS A1-LX-R4-U2-O . Firmware version 23-11

Parameter (code)	A1-LX-R4-U2-O	Other models and options*	Comments
Number of RF inputs /An	One /-A1-	Two, four, six /-A2-, -A4-, -A6-	Hardware option
Number of RF channels / Rn	Four /-R4-	1, 2, 4, 6 /-R1-, -R2-, -R4-, -R6-	User programmable central frequencies
Sampling rate	12,288 & 24,576 MS	16,368 ; 32,736 ; ~44 MS	Defined by firmware
Bit resolution	1-bit or 2-bit	2-bit, 2.5 -bit	Defined by firmware
I/Q	Real : I-hand	Complex : IQ	Defined by firmware
Signal format (sampling x bit)	4 x (24,576 MS x 1 bit)	Up to: N _{RF} x (~44 MS x 2.5 bit)	Defined by firmware
Optional (specify with order)*	4 x (12,288 MS x 2 bit)		Defined by firmware
Optional (specify with order)*	2 x (24,576 MS x 1 bit) + 2 x (12,288 MS x 2 bit)		Defined by firmware
Optional (specify with order)*	2 x (36,864 MS x 1 bit) + 2 x (12,288 MS x 1 bit)		Defined by firmware
Bandwidth	Programmable	Up to: ~36 MHz	Programmable by user
Interface	USB-2 / -U2-	USB-3 / -U3-	Hardware option
Frequency band	L-band /-LX-	L + S – bands /-LS-	Hardware option
Clock	OCXO /-O	OCXO, TCXO /-O , /-T	Hardware option
Example of GNSS signal presets	L1, B1, G1, L5	NavIC S	Included in package
Powered from	5V DC	USB / 5V DC	AC/DC adapter included

* For model options please visit www.ip-solutions.jp . For model customization send an inquiry to info@ip-solutions.jp
Additional lead time may apply